



**1 Bed  
Apartment  
located in**



# Flat 9, Lorne Court 2a

## Lorne Road

### London

#### E17 7PX



1



1



1



C

## £1,500 Per Month

1 Bedroom Ground Floor First Floor - Lorne Court, Lorne Road,  
Walthamstow E17 7PX

Sincere Lettings are pleased to offer this lovely First floor 1-bedroom flat, finished with stylish interiors throughout. Located on a quiet residential street just moments from excellent transport links and Walthamstow's thriving local amenities.

- Open Plan living
- Contemporary fitted kitchen
- Sleek bathroom suite
- Communal Outdoor space
- Natural light

#### Location:

Perfectly positioned close to Walthamstow Central and Queens Road, offering fast connections into Central London. A great selection of shops, cafes, and amenities can be found nearby along Hoe Street and Walthamstow Market.

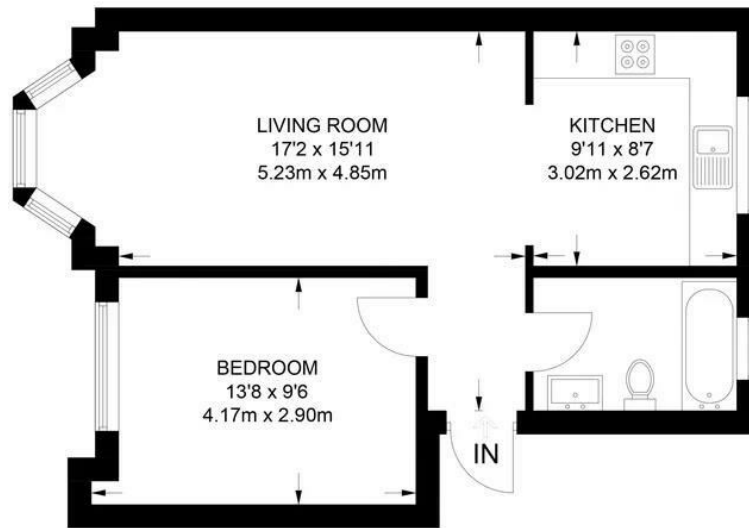
#### Transport:








Flat 9, Lorne Court 2a Lorne Road, London, E17 7PX



## GROUND FLOOR

**APPROXIMATE GROSS INTERNAL AREA**  
**484 SQ FT / 45.0 SQ M**

This plan has been drawn for illustrative and identification purposes only.

Energy Efficiency Rating		
	Current	Potential
Very energy efficient - lower running costs		
(92 plus) <b>A</b>		
(81-91) <b>B</b>		
(69-80) <b>C</b>	<b>76</b>	
(55-68) <b>D</b>		
(39-54) <b>E</b>		
(21-38) <b>F</b>		
(1-20) <b>G</b>		
Not energy efficient - higher running costs		
<b>England &amp; Wales</b>		EU Directive 2002/91/EC 

## DIRECTIONS

### CONTACT

252 Hoe Street  
London  
E17 3AX

E: [admin@sincerelettings.co.uk](mailto:admin@sincerelettings.co.uk)

T: 02085200425

[www.sincerelettings.co.uk](http://www.sincerelettings.co.uk)

